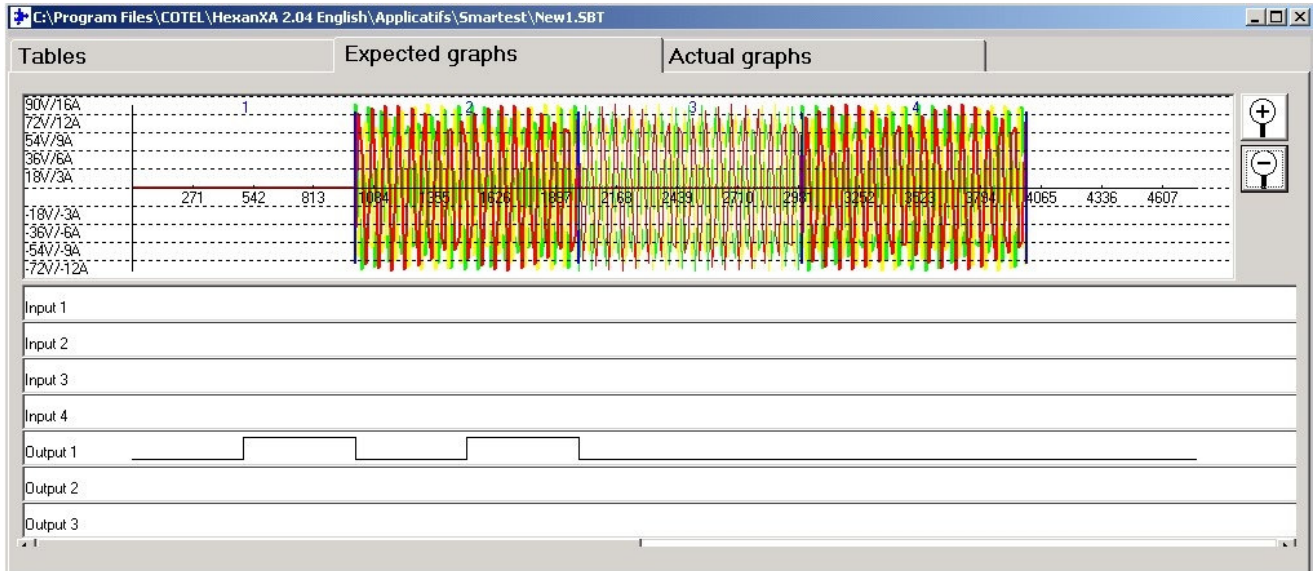
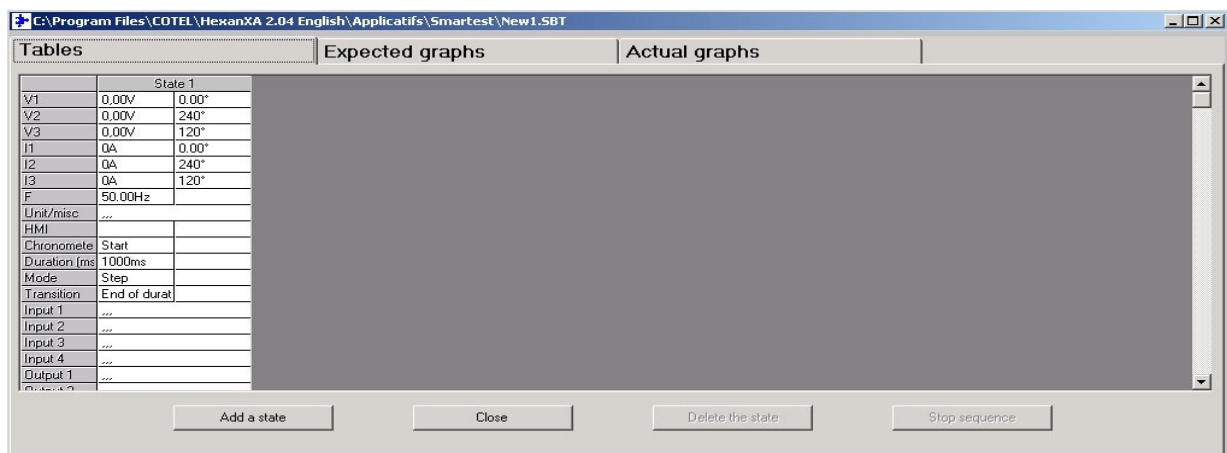


# SMARTEST Relay Test Software

by **COTEL**



**SMARTEST** is the State-Sequencing software package developed for programming tests of relays using **COTEL's** **HEXAN II** and **POWHEX** relay test sets. It is an easy to use package which simplifies the task of relay testing and report preparation. A succession of states is programmed such that they are applied in order, with the passage from one state to the next triggered by lapsed time, by an input to the timer or by signals on one or more of the test set inputs. The change can be either a "STEP" or a "RAMP", used for testing **ROCOF** relays. Such a sequence is recorded as a Base Test, and can be recalled from memory and run as required. Several Base Tests can be grouped into a Sequence and recalled and run as such. Once the test is completed, the settings, results and operator comments can be saved and a full report printed. Thus this software package greatly simplifies the testing, and especially the repetitive testing, of complex, multi-reaction relays and the preparation of the necessary reports.



**Advanced Technology Marketing Services**—26, High Street, HASLEMERE GU27 2HW  
 Tel - 07717763510 E-mail—[sales@advantechms.com](mailto:sales@advantechms.com)  
[www.advantechms.com](http://www.advantechms.com)

Exclusive U.K. Service Organisation for COTEL products — **Norwich Instrument Services Ltd.** Tel 01603416900

## **Other HEXAN/POWHEX software packages.**

Whereas the **MANUSOFT** package is used to drive all the functions of HEXAN and POWHEX from a computer, and **SMARTEST** is used for repetitive testing and also **ROCOF** relays, there are other tailored software packages for specific applications.

**G59/2** – For De-Coupling relays testing to the G59/2 standard required for PV and Wind Farm connections to the network.

**Prodi** – is the package for testing Distance Relays, and offers a choice of test sequences adapted to specific relays. If there is a requirement for testing a distance relay not already included in the list, we can add another to the list promptly.

**Synchro Coupler** – Sets up outputs of V, Frequency and Phase from HEXAN for testing Sychro-Coupler relays.

**Miti** – Produces the curve of opening time against current for the Maximum Current function of a relay;

**PWh** – For testing Wattmetric Homopolar relays used on compensated neutral networks. The software sets up outputs of residual voltage and current on the neutral.

**DDL** – For Detection of Line Fault relays. For testing relays used on DC railway networks.

Please contact us if your testing requirement is not, or does not appear to be, covered by MANUSOFT, SMARTEST or the packages above.