

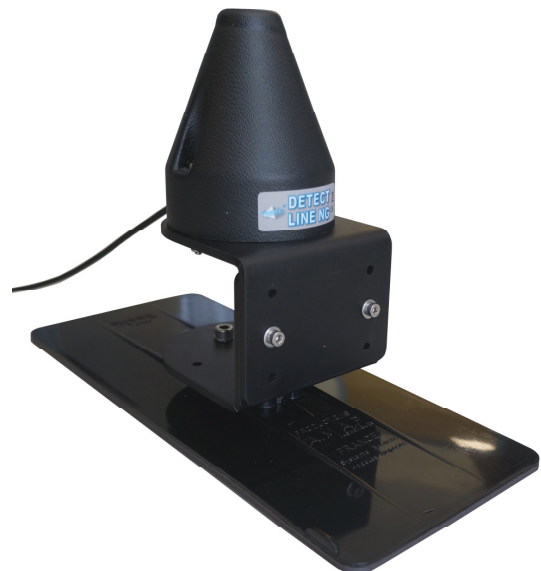
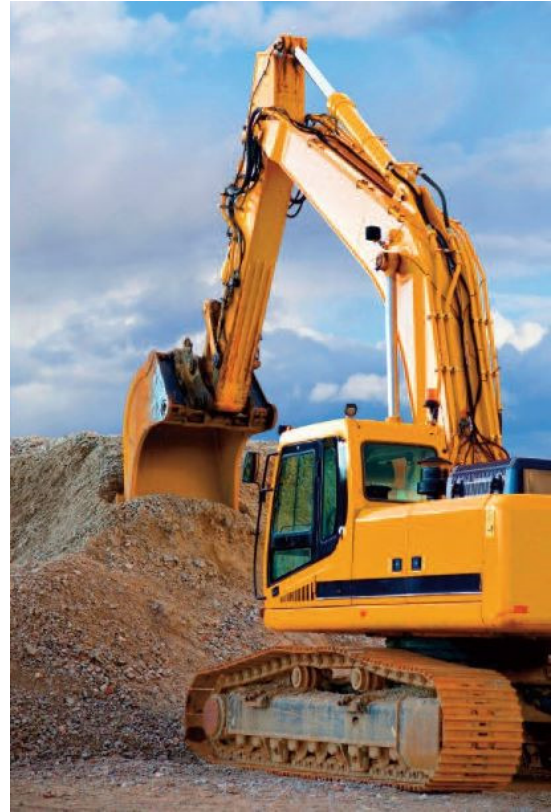
Detect Line NG

High Voltage Line Warning System for High-Lift equipment and vehicles
by **MADE-SA**

- **Zonal warning**
- **10 to 40 m. from HV Line**
- **Simple Single Sensor System**
- **Straightforward Installation**
- **No False Alarms**
- **Fire-Fighting Vehicle Version**

Detect Line NG uses the proven **Sky NG Radio** technology to warn of a High Voltage line in proximity to a Digger, Crane, Concrete Pump, Fire Engine or any other High-Lift vehicle. A detector mounted on the vehicle cab roof senses the electric field generated by the High Voltage line and gives an audible and visual warning. The warning distance is configurable between 10 and 40 meters from an HV line. After detection of an HV line, the system can be set to “silence” mode, in which it just makes a “bip” every 30 seconds to remind the operator of the line’s proximity. Dry contact outputs can be used to block all or part of the movement of the equipment. (Not used for Fire Engines).

Installation is very simple, and the system auto-tests at each start-up. The system is a very cost effective solution for equipping vehicles for use on sites where an HV warning system is required or advisable.



Detect Line NG detector.

Fire Vehicle Application

From the nature of the Fire-Fighting mission, fire engines may be called on to work in proximity to High Voltage electric power lines with no forewarning, frequently in stressful environments of danger and/or fumes. Of course safety procedures are followed, but there is always scope for additional security. The **Detect Line NG** system gives an alert immediately the vehicle approaches a Power Line and continues to warn the operators of this risk as long as it exists.

The Fire Engine version of the **Detect Line NG** has two detectors mounted each side of the cab roof for better all-round detection and to accommodate the ladder or other element over the cab. As well as reducing the risk of personnel injury, or worse, the ever-watching system can avoid the considerable cost of equipment repair after a line-strike. There is an optional display for the ladder operator to keep him aware of any alarms.

For vehicles with elevating nacelles, a **SKY RADIO NG** system is installed on the nacelle for greater safety, helping to avoid inadvertently manoeuvring the nacelle too close to a power line, especially when the visibility is reduced by smoke or darkness.



On this fire engine equipped with **Detect Line NG**, the left-hand antenna is visible, capped by its protective cone, next to the blue rotating beacon.



The views on the left show a fire-fighting nacelle equipped with **SKY RADIO NG**. The detectors are mounted around the nacelle to cover 360 degrees, and the view below shows the control box in the nacelle.



Detect Line NG and **SKY RADIO NG** are operational aids to improve safety. The fitting and use of these systems should be additional to, and not substituted for, normal operational safety procedures.